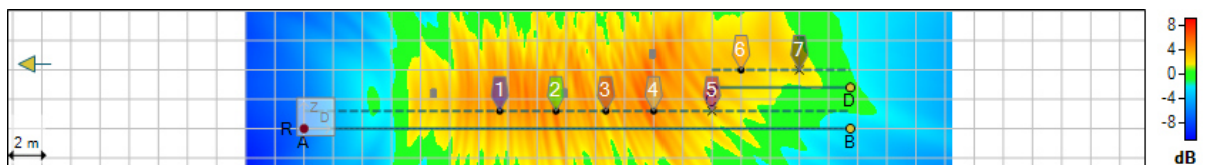
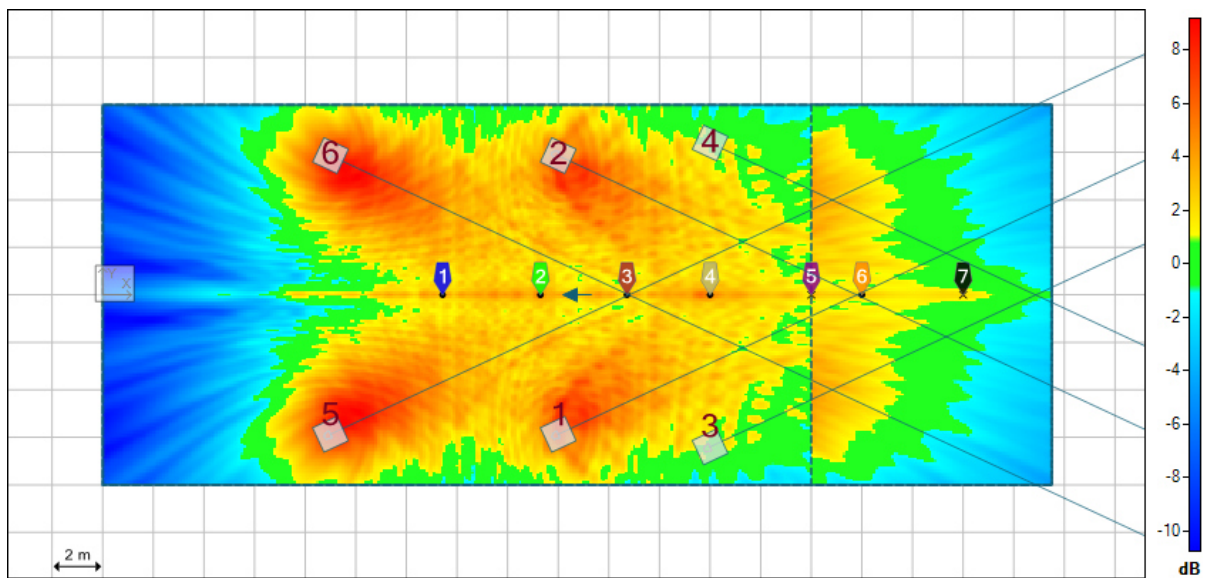


1 Project Information

Project Title: Nicolai Kirche Oebisfelde
 Date: Donnerstag, 4. Juli 2019
 Author: Lars Allermann
 Company: ME event technik
 Notes: Kirchbeschallung
 Front, Delay, Empore
 Temperature: 20,0°C
 Pressure: Standard (1010 hPa)
 Humidity: Standard (60%)
 Mapping: Broadband - No Weighting (Relative: Average \pm 1 dB)

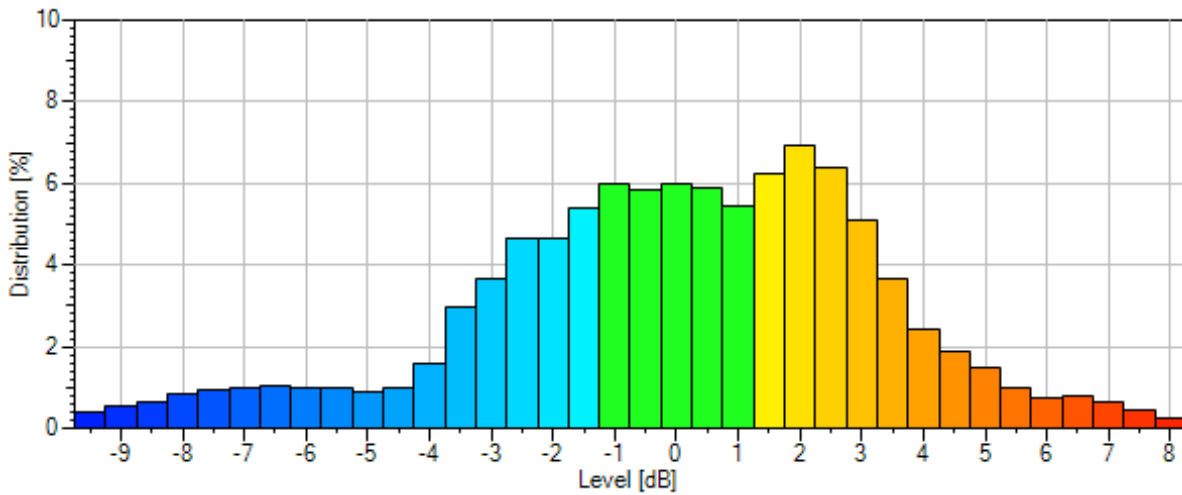


2 Sound Sources

Label	Type	System	X [m]	Y [m]	Z [m]	Hor [°]	Ver [°]	Rot [°]
1 M10 Delay L	Loudspeaker	M10 75°x50°	18,00	-5,50	2,40	25,0	0,0	0,0
2 M10 Delay R	Loudspeaker	M10 75°x50°	18,00	5,50	2,40	-25,0	0,0	0,0
3 M10 Empore L	Loudspeaker	M10 75°x50°	24,00	-6,00	5,10	25,0	0,0	0,0
4 M10 Empore R	Loudspeaker	M10 75°x50°	24,00	6,00	5,10	-25,0	0,0	0,0
5 M10 Front L	Loudspeaker	M10 75°x50°	9,00	-5,50	2,40	25,0	0,0	0,0
6 M10 Front R	Loudspeaker	M10 75°x50°	9,00	5,50	2,40	-25,0	0,0	0,0

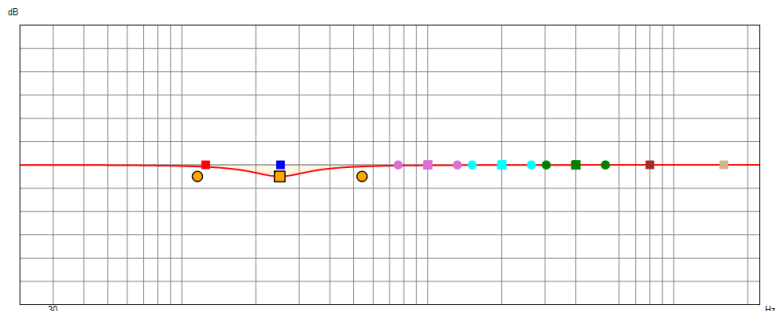
3 Distribution

Average: 0,0 dB ±3,3
 Average - Std. Dev.: -3,3 dB
 Average + Std. Dev.: 3,3 dB



4 Global Filter

Filter Status: Active
 Gain: 0,0 dB
 Delay: 0,000 ms
 Polarity: Normal



Filter 1	Filter Type	Frequency	Gain / Slope	Q Factor
	Peak (Symmetric)	250 Hz	-3,0 dB	1,80